

Thermal Printer Mechanism

LTP02 Series



POS/ECR



EFT-POS



Measuring Instrument



Mobile Printer



Medical Equipment

- Max. printing speed: 100mm/sec
- Extremely compact design for mobile terminal
- Light weight only 28g



LTP02-245

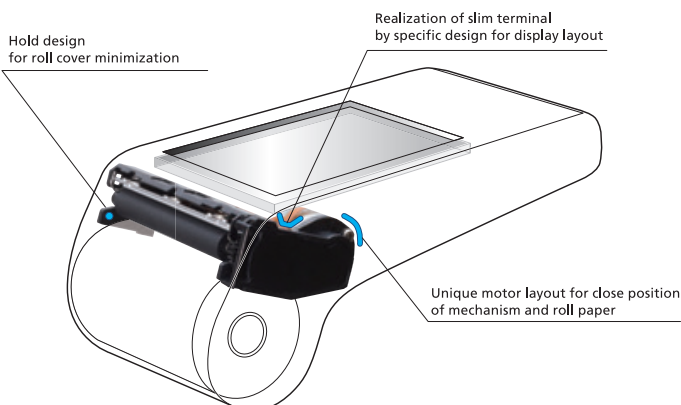
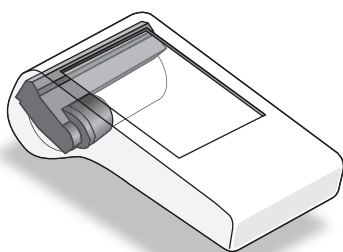
Model		LTP02-245		
		Standard model (LTP02-245-13x)	High speed model (LTP02-245-A3)	Low energy model (LTP02-245-C1)
Printing	Method	Thermal line dot printing		
	Number of dots/line	384		
	Resolution (dots/mm)	8		
	Paper width (mm)	58 ⁺⁰ ₋₁		
	Printing width (mm)	48		
	Speed (mm/sec) max	100	120 (9.0V) 165 (12.0V)	85
	Paper path	Curved		
Detection	Head temperature	By thermistor		
	Out of paper	By photo interrupter		
Power supply (V)	Operation voltage (V _{dd})	3.0 to 3.6		
	Operation voltage (V _p)	5.5 to 9.5	5.5 to 9.5, 10.8 to 12.6	3.0 to 4.2
Peak current (A)	Head	2.64 (9.5V / 45 dots)	3.02 (12.6V / 48 dots)	5.99 (4.2V / 129 dots)
	Motor	0.6	0.6	1.0
Service Life	Pulse activation (pulse)	100 million	50 million	100 million
	Abrasion resistance (km)	50 ^{±1}		
Operating temperature (°C)		-10 to 50		
Dimensions (W×D×H mm)		67.3 × 18.1 × 30.0 ^{*2}		
Mass (g)		Approx. 28		

*1 Use recommended thermal papers. *2 Excluding protrusion.

CPU

Model	PT02-5SU	PT02-3U
Thermal printer	LTP02-245-13x	LTP02-245-C1
Package form	48pin LQFP	
Operating voltage (v)	V _p : 5.5 to 9.5	V _p : 3.3 to 4.2
	V _{cc} : 3.0 to 3.6	V _{cc} : 3.0 to 3.6
Input frequency (MHz)	16 ± 0.01%	
Configuration	C-MOS LSI	
Communication interface	USB input / output (Device / Printer class / Full speed)	
Character type	ASCII Code	
Dimensions (W×D×H mm)	9.0 × 9.0 × 1.5	

Smart design to contribute reducing terminal size!



Official site <http://www.sii.com.tw/>



Seiko Instruments Taiwan Inc.

2F., No. 143, Changchun Rd.,
Taipei, Taiwan R.O.C.

Telephone:+886-2-2563-5001 Facsimile:+886-2-2563-5580